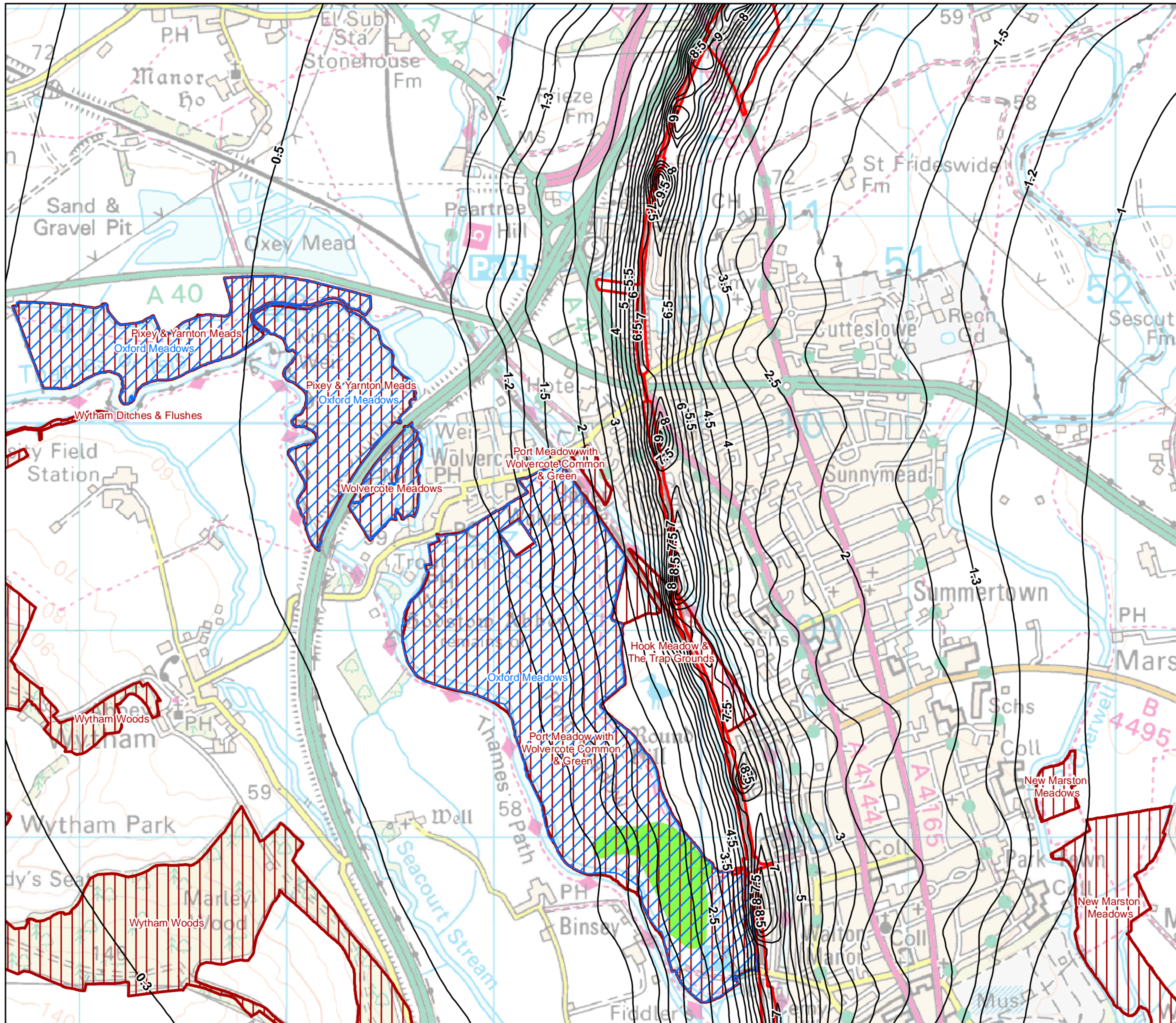
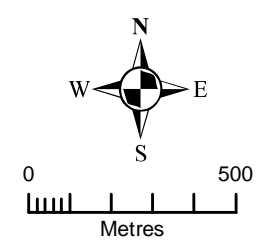


Appendix ASC 3

**Additional NO_x
Concentrations at Oxford
Meadows**



- KEY:
- Scheme Boundary
 - Area where *Apium repens* (creeping marshwort) has been confirmed, or contains habitat suitable for this species to occur
 - Special Area of Conservation
 - Sites of Special Scientific Interest
 - NO_x Concentration (µg/m³)



TITLE:
Figure 1
 NO_x Concentrations for Ecological Sites Near Oxford (µg/m³)

CLIENT: **Chiltern Railways** SIZE: A3

DATE: 06/08/2010	CHECKED: SL	PROJECT: 0094441
DRAWN: FS	APPROVED:	SCALE: As Scale Bar
DRAWING: Figure1_NO2_OM_2005.mxd		REV: 0

ERM
 Eaton House
 Wallbrook Court
 North Hinksey Lane
 Oxford OX2 0QS
 Telephone: 01865 384800
 Facsimile: 01865 204982

SOURCE: Reproduced from Ordnance Survey digital map data. © Crown copyright, All rights reserved. 2009 License number 0100031673. English Nature, 100017954 (2009)
 PROJECTION: British National Grid